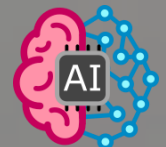


Panel Discussion, May 19th 2021
*Emerging Trends in AI/ML and
Implications for Networking Research*

Dario Rossi
dario.rossi@huawei.com



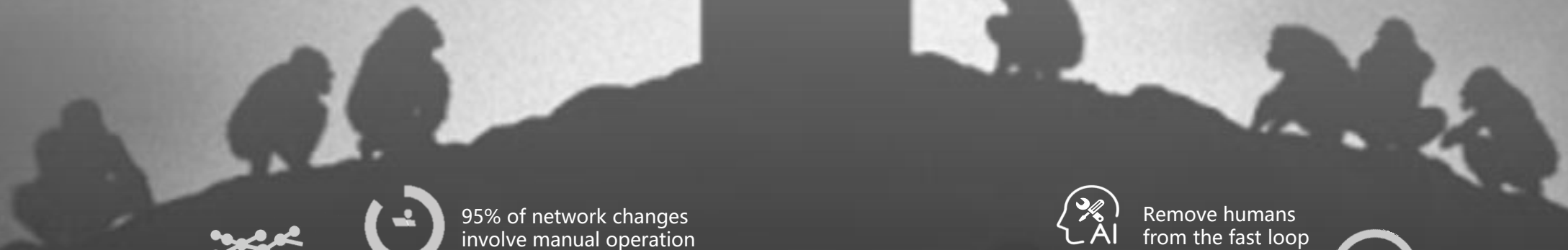
Autonomous driving



network



AI & ML



95% of network changes involve manual operation



70% network faults are caused by manual error



Remove humans from the fast loop

+



Keep human in the slow loop



∞ Industry segments & requirements

High reliability



Transportation

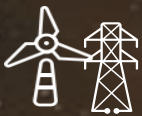
Differentiated services



Government



Healthcare



Energy



Education

Smart O&M



Manufacturing

Real-time, high bandwidth



Mining



Finance

3 Network scenarios

Campus network

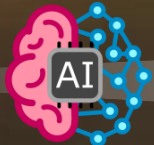
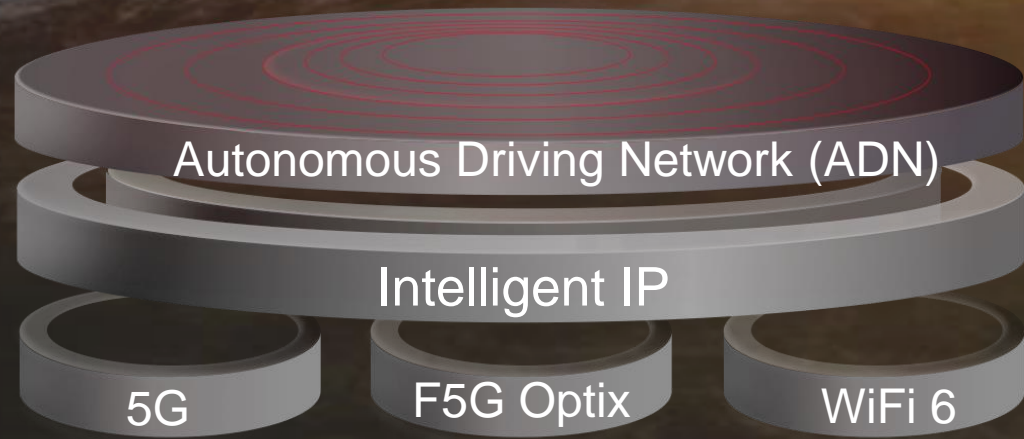
DCN

WAN

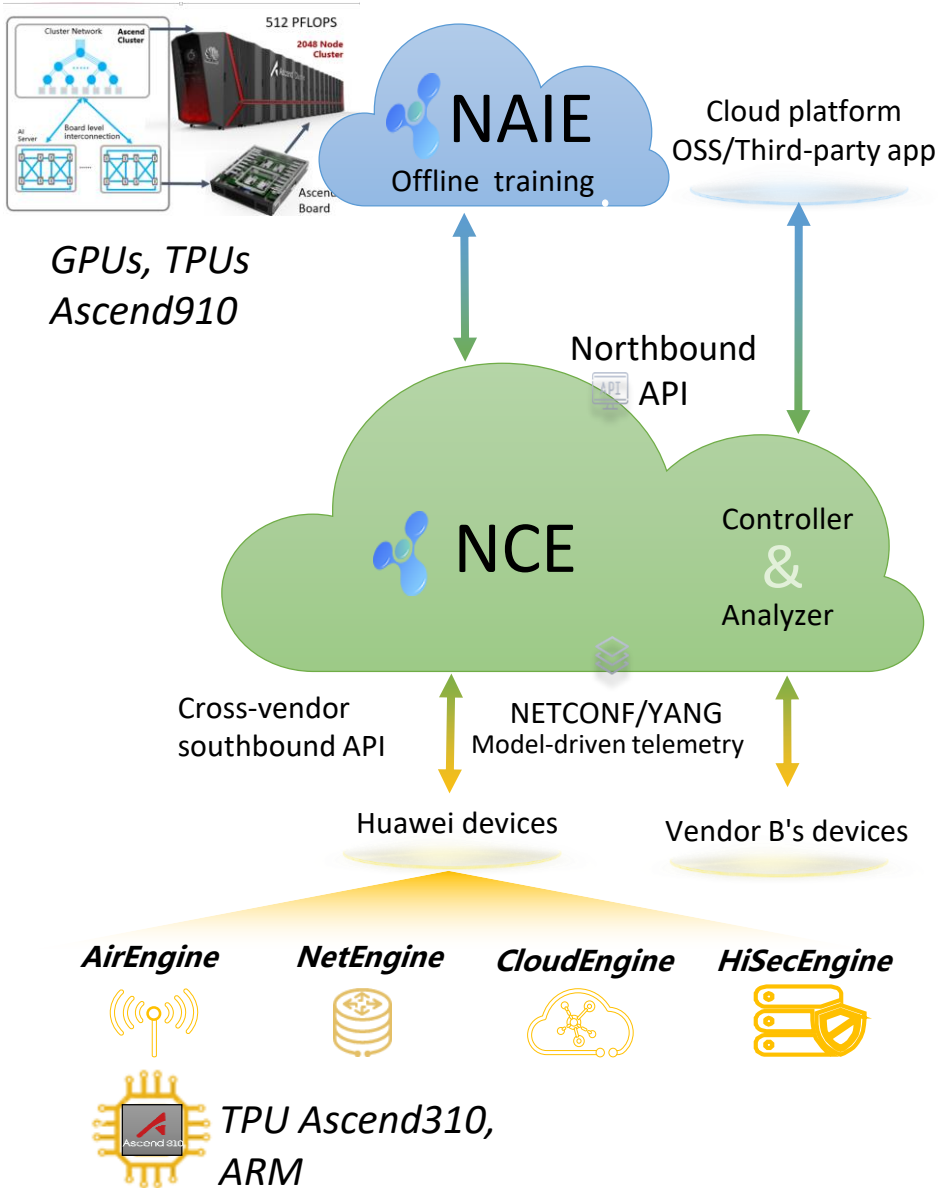
+

Security

1 Technology solution



Network AI in Huawei



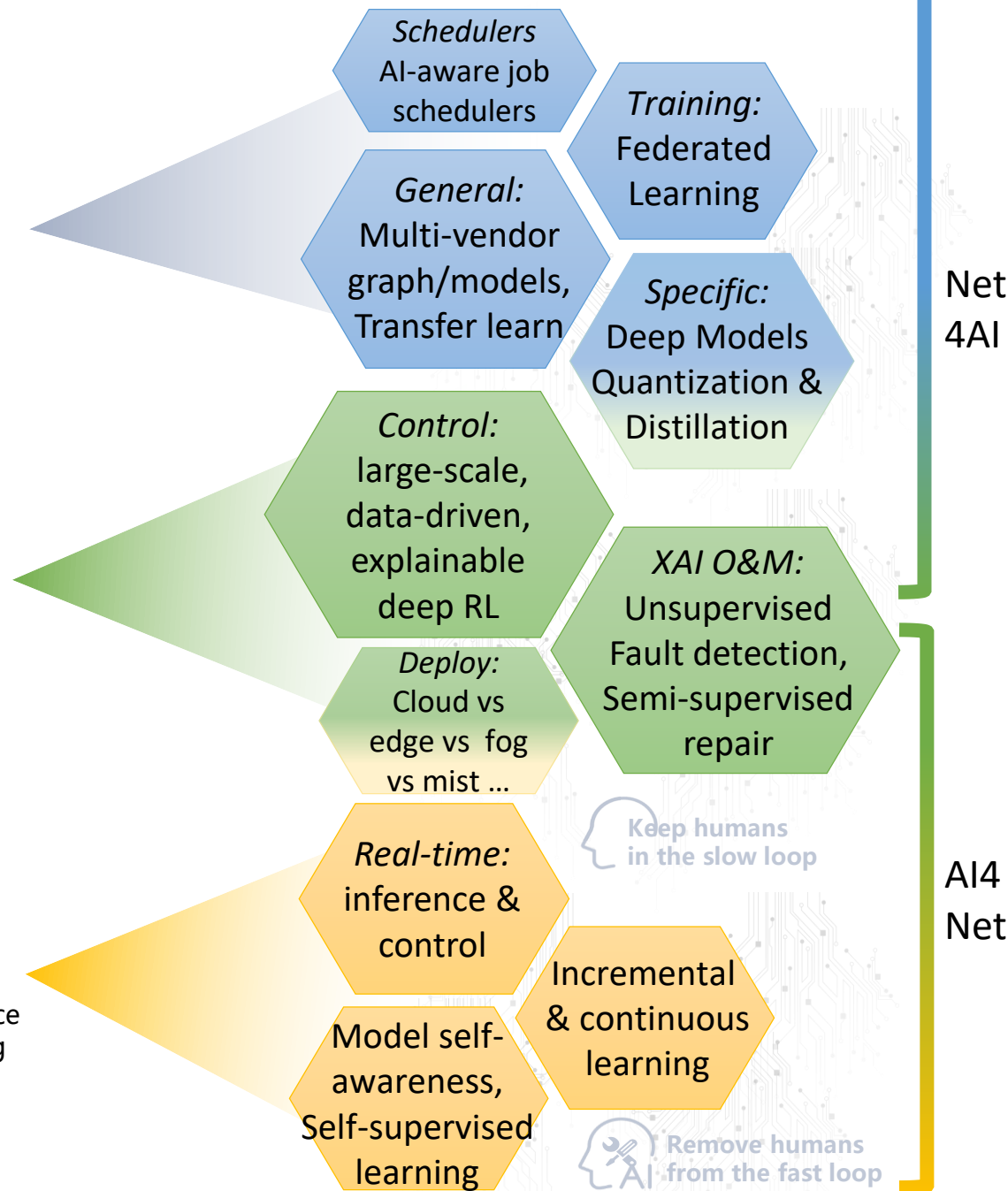
iMaster NAIE
Training, data aggregation, and model generalization

iMaster NCE
Network-wide analysis, inference & closed-loop optimization

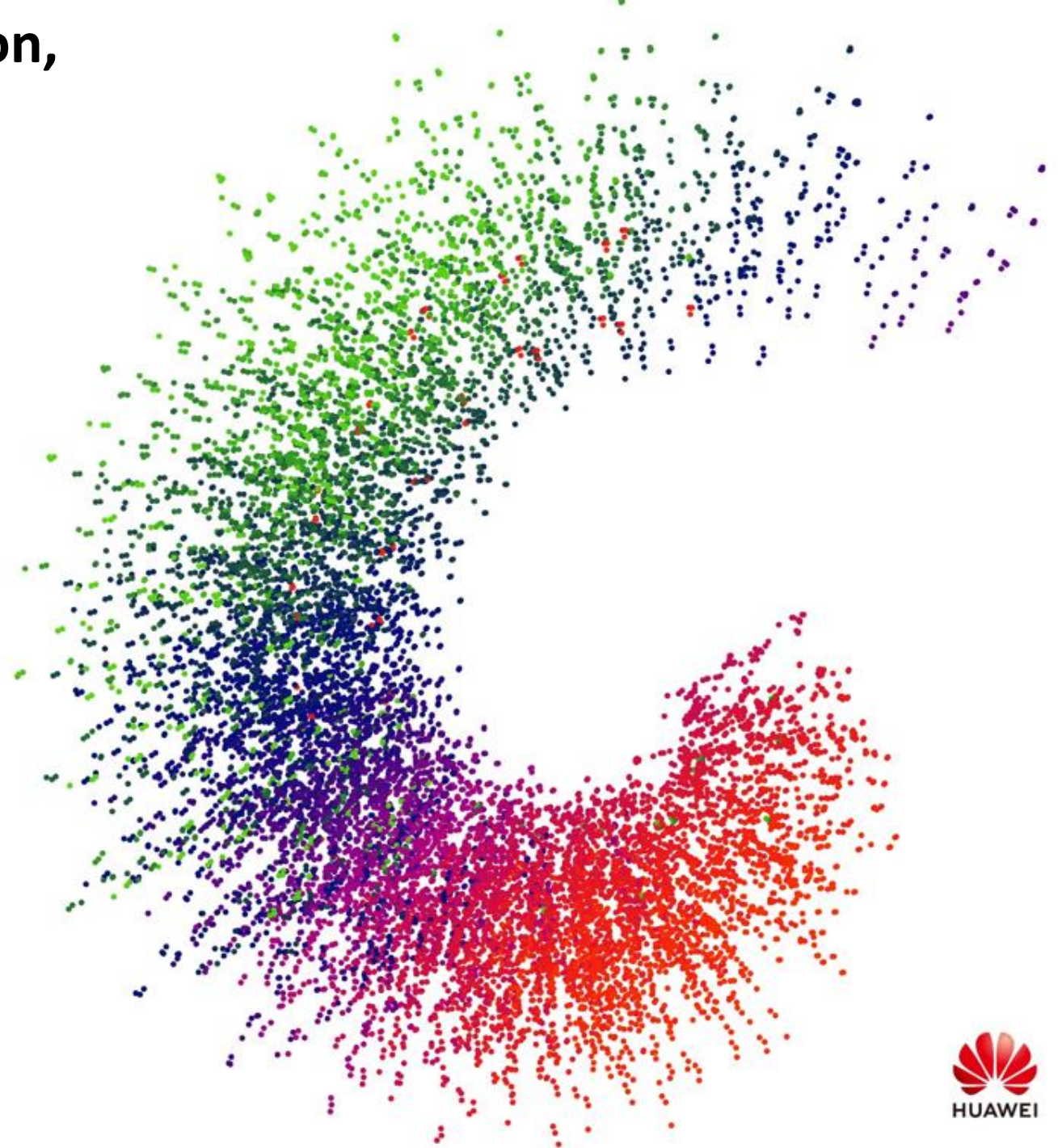
Engines

Measurement, edge inference & real-time decision-making

Opportunity & challenges



Thanks



Dario Rossi

dario.rossi@huawei.com

<https://nonsns.github.io>