

Networking Channel: Challenges at Layer 8

Network neutrality, the digital divide and spectrum



Sonia Jorge, Executive Director
a4ai.org
June 2, 2021

Affordability still a major barrier to access



The high cost to connect is excluding billions from the digital revolution

Nearly half of the world's population is still offline
At current rates, on track to miss global access target by 20+ years

Just 43 out of 95 countries met the "1 for 2" affordability target in 2020
1GB for 2% or less of average monthly income



**WORLD WIDE WEB
FOUNDATION**

Key Indicators Across Region



In Africa...



 **ONLINE POPULATION**
Source: ITU, 2019



 **MOBILE BROADBAND PENETRATION**
Source: A4AI from GSMAi, 2020



 **INTERNET USE GENDER GAP**
Source: ITU, 2019

In the Americas...



 **ONLINE POPULATION**
Source: ITU, 2019



 **MOBILE BROADBAND PENETRATION**
Source: A4AI from GSMAi, 2020



 **WOMEN UNCONNECTED**
Source: GSMA, 2019

Across Asia-Pacific...



 **ONLINE POPULATION**
Source: ITU, 2019



 **MOBILE BROADBAND PENETRATION**
Source: A4AI from GSMAi, 2020

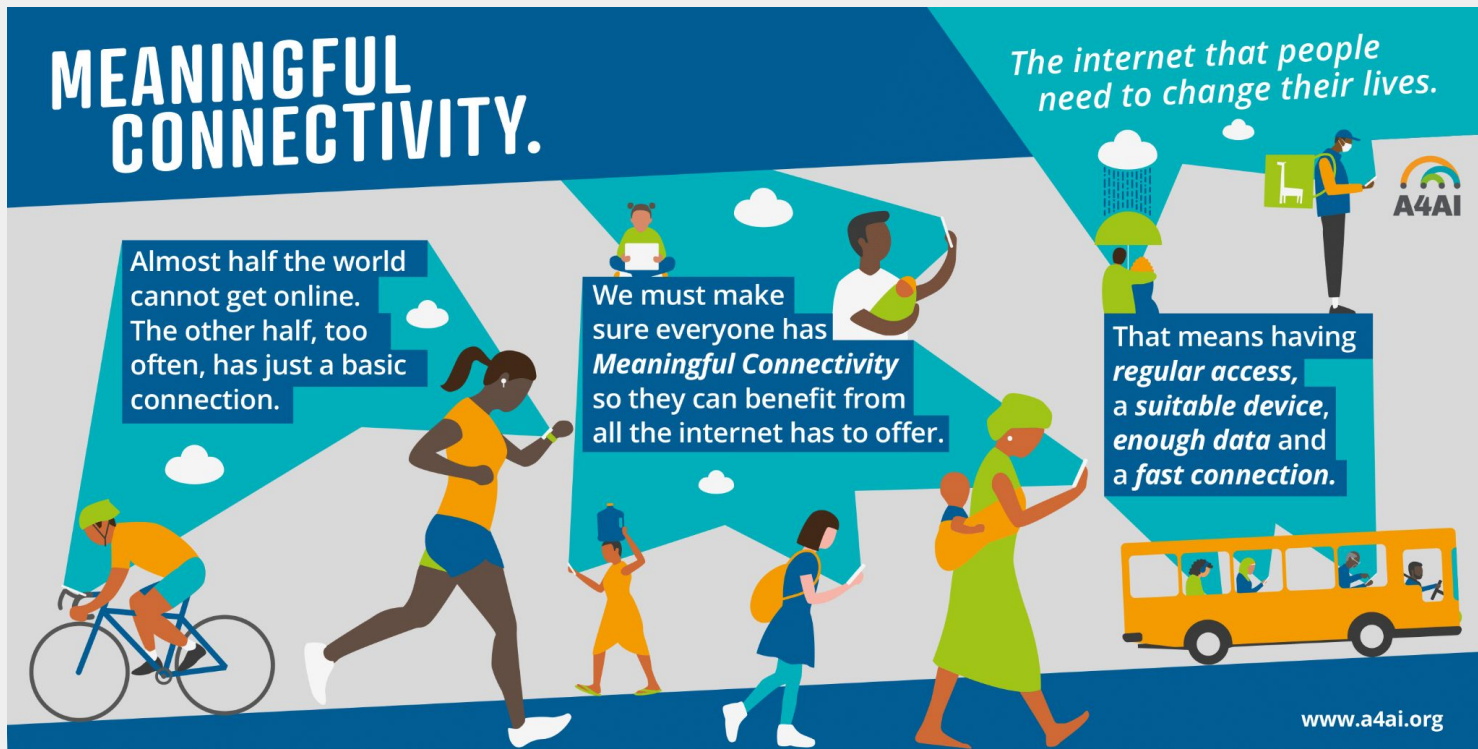


 **INTERNET USE GENDER GAP**
Source: ITU, 2019



**WORLD WIDE WEB
FOUNDATION**

Meaningful Connectivity



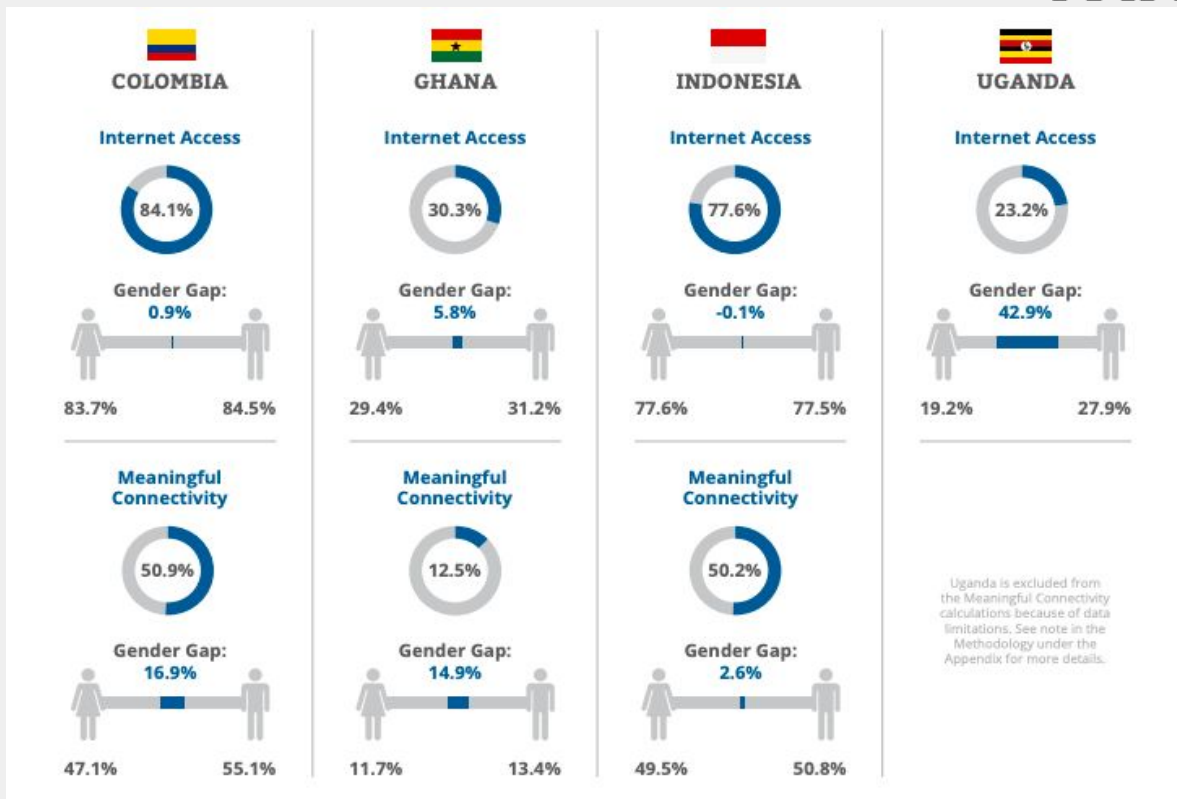
Meaningful Connectivity



Meaningful Connectivity

where everyone has the ability to *use the internet every day using an appropriate device with enough data and a fast connection.*

Even in countries where the overall digital gender gap is small, the meaningful connectivity gap in terms of gender is significant.



Source: A4AI 2020 | 2020 Web Foundation nationally representative household survey data in Colombia, Ghana, Uganda and Indonesia



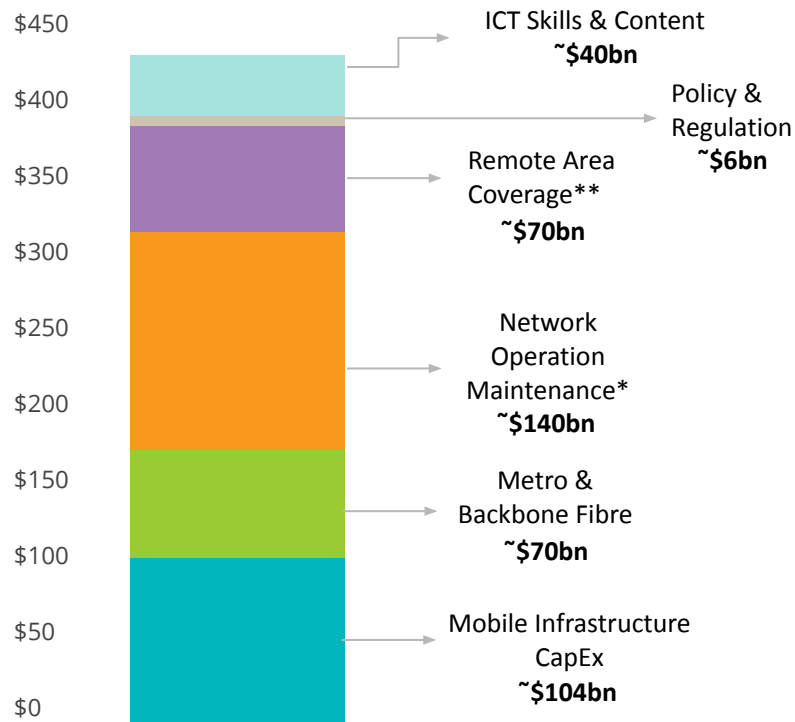
**WORLD WIDE WEB
FOUNDATION**

Connecting Humanity 2030



An estimated **USD\$428 billion** is needed to connect all of humanity to the Internet by 2030.

Source: *Connecting Humanity – Assessing investment needs of connecting humanity to the Internet by 2030*. ITU, A4AI, 2020.

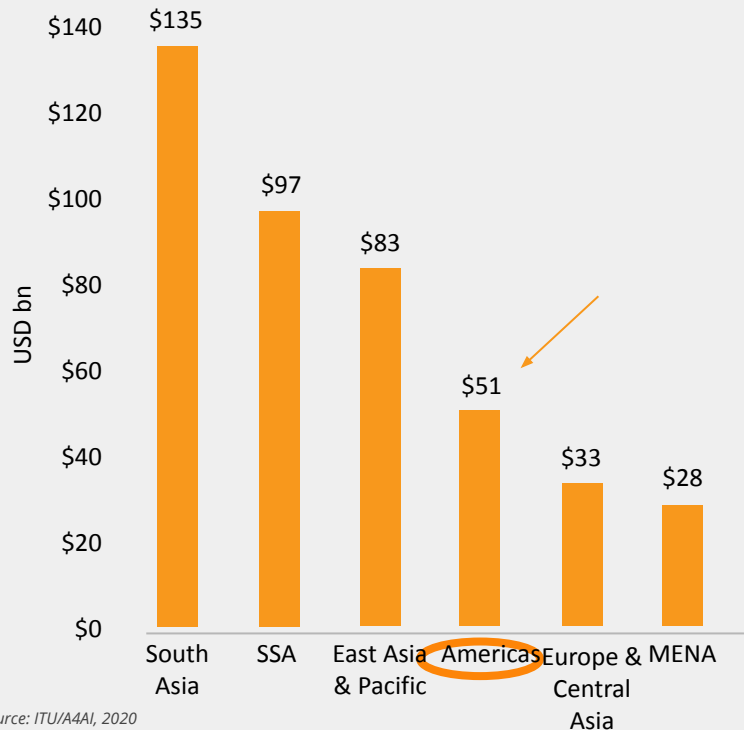


Source: ITU/A4AI, 2020

Connecting Humanity 2030

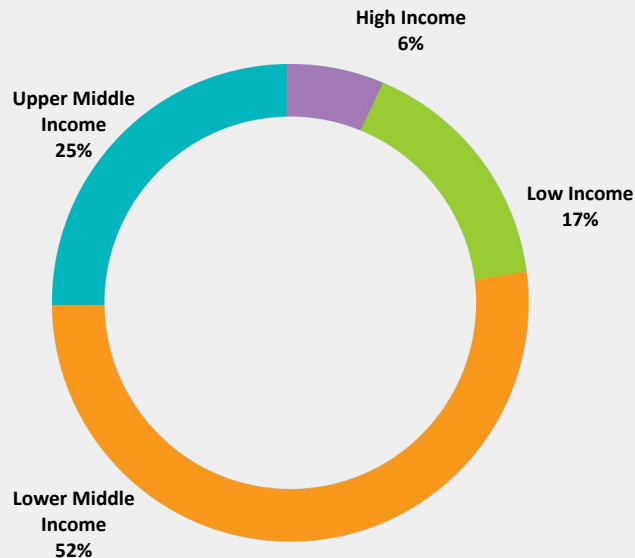


Connecting Humanity to Broadband – Investment Requirements by Region



Source: ITU/A4AI, 2020

Connecting Humanity to Broadband – Investment Requirements by Country Income Group



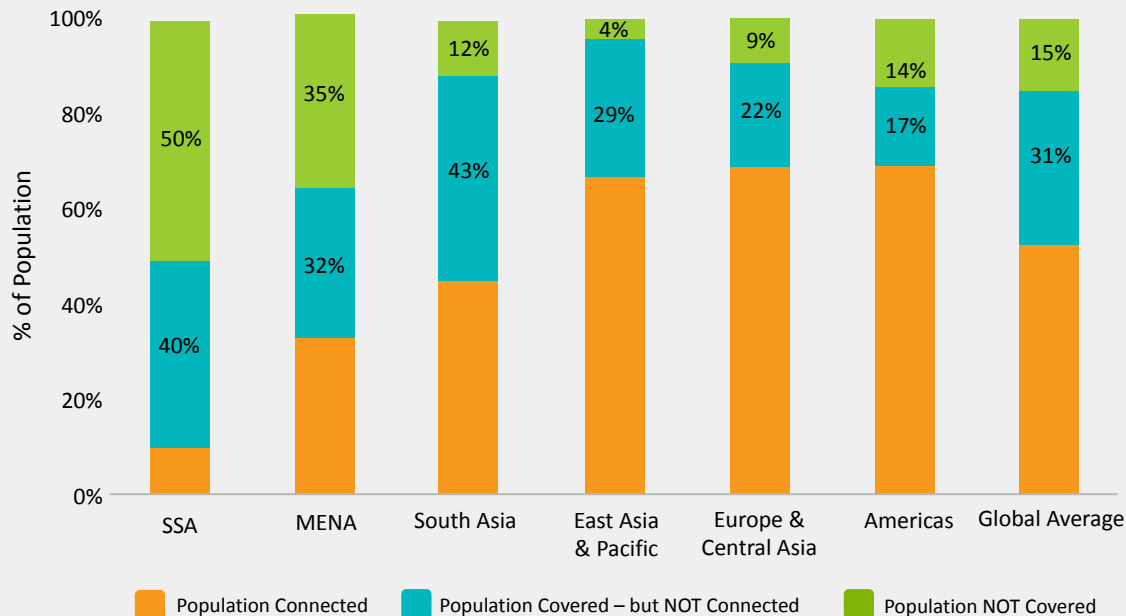
Source: A4AI & Xalam Analytics, 2020

Despite progress, the **investment needs remain significant.**

Infrastructure Alone is not Sufficient



4G Coverage of the Population - 2019



Beyond infrastructure:

Complementary initiatives are needed to connect people already covered by broadband networks. These include programs to increase and support **device affordability**, **affordability of data and services**, **digital skills programs and content**, with a special focus on **closing the digital gender gap**.

Thank you!

sonia.jorge@webfoundation.org